

Siebring

Flyer

April 2004



Why Is It So Easy?

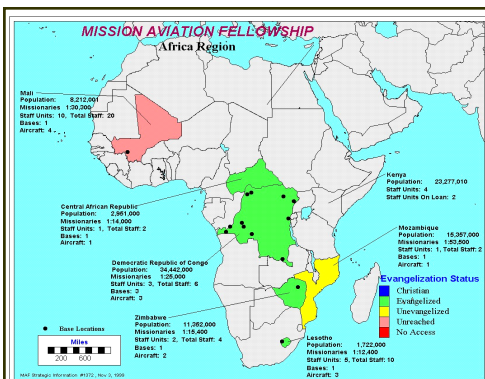
"This is one of those moments that you savor" I thought to myself even as 100lbs of attacking, tickling children pile on top of their Daddy. It was a nice break in the routine of work for the day.

It is amazing how easily we can get ourselves in a routine in every capacity of our life. Our relationship with God especially. One thought lead to another and soon I realized I had been pondering a question for several weeks. Why is it so easy to get into a routine?

My conclusion: We are creatures of habit. Resistant to change. But then this thought came to mind "Living things grow and growing things change". For this not to be the case indicates stagnation and death. Read Jn 15:1-8.

Our family is definitely going through lot's of changes and much pruning preparing to move overseas. I am encouraged by the passage above that it is only to increase our fruit and effectiveness in the kingdom of God. I don't want to remain the same but want to continually grow forward.

My parting challenge to you would be to check your branches. If you are lacking fruit it may be time for some change (pruning). It may not be enjoyable but the greater fruit is worth it. - Ray



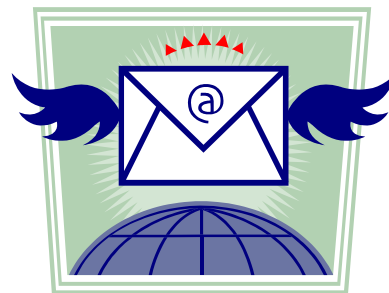
LESOTHO PROFILE

Africa has drawn missionaries and explorers alike since the 1800's. As early as 1946, missionaries were looking at the advantages of using a small airplane to facilitate their work.

Sudan Interior Mission, in consultation with newly emerging Missionary Aviation Fellowship, bought a plane, and MAF-US supplied a pilot for their work in Nigeria. Today, we serve several African nations as depicted in the picture above.

Lesotho Today: 5 families, 1 base, 3 aircraft. MAF's primary role is transportation for the Lesotho Flying Doctor Service. MAF-US provides the primary health care resource for over 50,000 people living in small villages of that country.

The medical ministry opens doors for opportunities like the Jesus Film and other church evangelism programs from believers in the cities to remote areas. -MAF Operations



Choice of Service

As we took up our calling as missionaries with MAF we believed our service was not just to those in a foreign land but equally to those the Lord has brought into our ministry at home. Our way of ministering to you at home is through our newsletters. We enjoy sending them and appreciate you taking the time to read them.

It has come to our attention the large expense of these mailings and for this reason we are asking if you may have an email address.? If you would prefer our letters electronically in the future, a system for this will be developed.

We constantly evaluate our use of the resources given us so that we may be good stewards with the finances of MAF and those supporting our ministry.

If you prefer a paper copy of our newsletters you need to do nothing. If in the future an emailed copy is your choice of communication then please email us at: rsiebring@maf.org.

Just as a side note, when we are overseas, our primary form of communication will be through email. We don't want to lose contact with you. We also occasionally send out a news, prayer or praise email with time critical information. If you would like to receive this please email us. Thank you for helping us with this effort. -Ray



Ray and Julie Siebring • Email: Rsiebring@maf.org • Cell phone: (207) 467-1057
Support Address: Mission Aviation Fellowship • PO Box 3202 • Redlands, CA 92373-0998

Praise & Prayer

Praise:

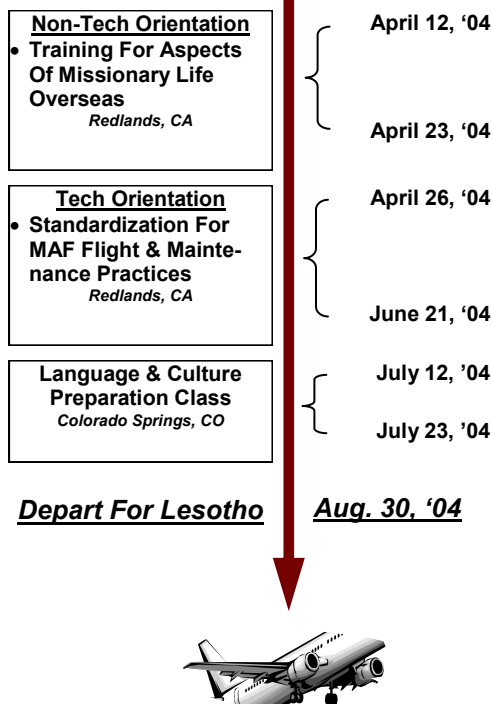
- Safely traveled across the country again.
- Fantastic Ministry opportunities and family adventures seeing the sights

Prayer

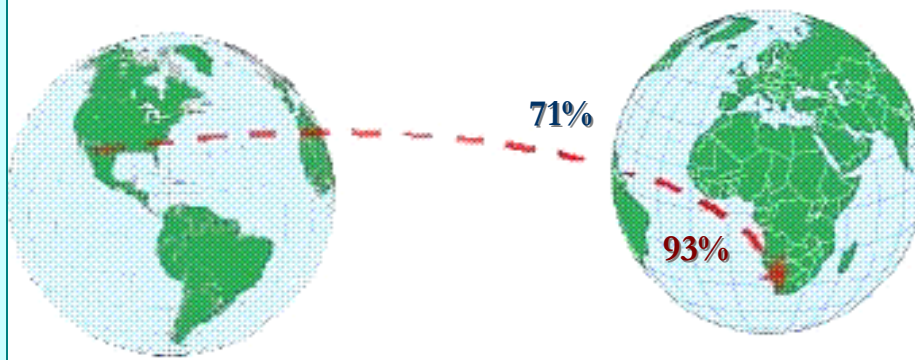
- Clarity of thought as we attend classes
- Easy transition for our kids as we are separated during the days.
- Ray's flight and Maintenance training to go well. It has been so long since using these skills.



Our Tentative Timeline...



USA to Lesotho, Africa



93% Of Our Monthly Ministry Support & 71% Of Our Outgoing Ministry Expenses Have Come In. PTL!

So When Are You Leaving For Africa?

This title is a question we have heard quite often. We then proceed to explain the process of training required to serve in this capacity as a missionary pilot with MAF. There is much training because there is such a high level of safety to be kept both in flight and maintenance. This is nothing to say of the additional cultural and spiritual training we receive.

As you read this we are now in beautiful sunny southern California beginning our tech and non-tech orientation. What is that? I am so glad you asked. We are beginning with our non-tech orientation which are classes on how to survive as a missionary overseas. Some of the classes include: security issues, coping skills, cultural awareness, health issues, financial classes and much more.

The technical Orientation includes flight and maintenance standardization. Standardization is a fancy way of saying doing it the MAF way. MAF has learned from many years of experience the right way of applying the highest levels of safety and professionalism to all areas of flight and maintenance. Flying in a undeveloped region that hosts inhospitable terrain is much different than the radar soaked sky's and big runways of America.

One last item we share when asked the question in the title is that our family cannot depart for the field until we have received our full level of both monthly and outgoing ministry support. If you have thought of supporting our ministry financially then now would be the time to start because we cannot depart without this need being met. We are very thankful for the opportunity to learn from all these classes and MAF's years of experience. This will improve our longevity and effectiveness as MAF missionaries to Lesotho Africa.

*Ray + Julie Siebring,
Clias, Gabriella + Josiah*